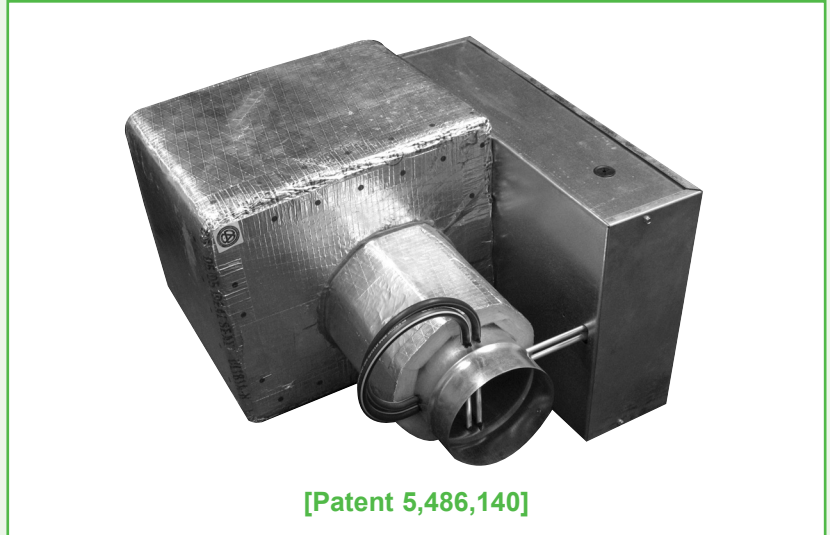




## CLEAN AIR TERMINAL – Model AHC



[Patent 5,486,140]

### Model AHC

The Air Zoë Model AHC is available as a basic control unit with open end discharge, and an optional multi-discharge adapter module.

This unit offers low pressure drop, low sound levels, and valve characteristics which create stable control condi-

tions within the conditioned space. This product is ideal for Hospitals, Labs, Schools, Government Buildings, i.e., anywhere indoor Air Quality (IAQ) concerns exist.

#### *Features Include:*

- Air flow capacities from full shut-off to 4,200 CFM (0-3,000 FPM for each unit size).
- Open-end discharge units are provided with slip and drive connections for easy installation.
- Externally thermally and acoustically insulated casing meets **UL** and **NFPA** standards.
- No insulation comes in contact with the air steam.
- Shell insulation is 1" thick and has a continuous density of 4.25 lbs./cu. ft. with a 4.5 R-value.
- Low leakage damper design.
- Pneumatic, electric, electronic, or manual control options available.
- Averaging type air flow sensor at inlet of unit.
- Optional cross flow averaging type velocity sensor at inlet of unit.
- Optional pressure independent and pressure dependent controls.
- Optional controls enclosure.
- Optional access panel for component inspection.
- Multi-discharge adapters have round outlet connections with integral balancing dampers.
- **ARI** certified product.

#### *Available Modules:*

- Basic Control Unit — **Model AHC**
- Multi-Discharge Adapter — **Model AXM**



External Insulation  
Standard



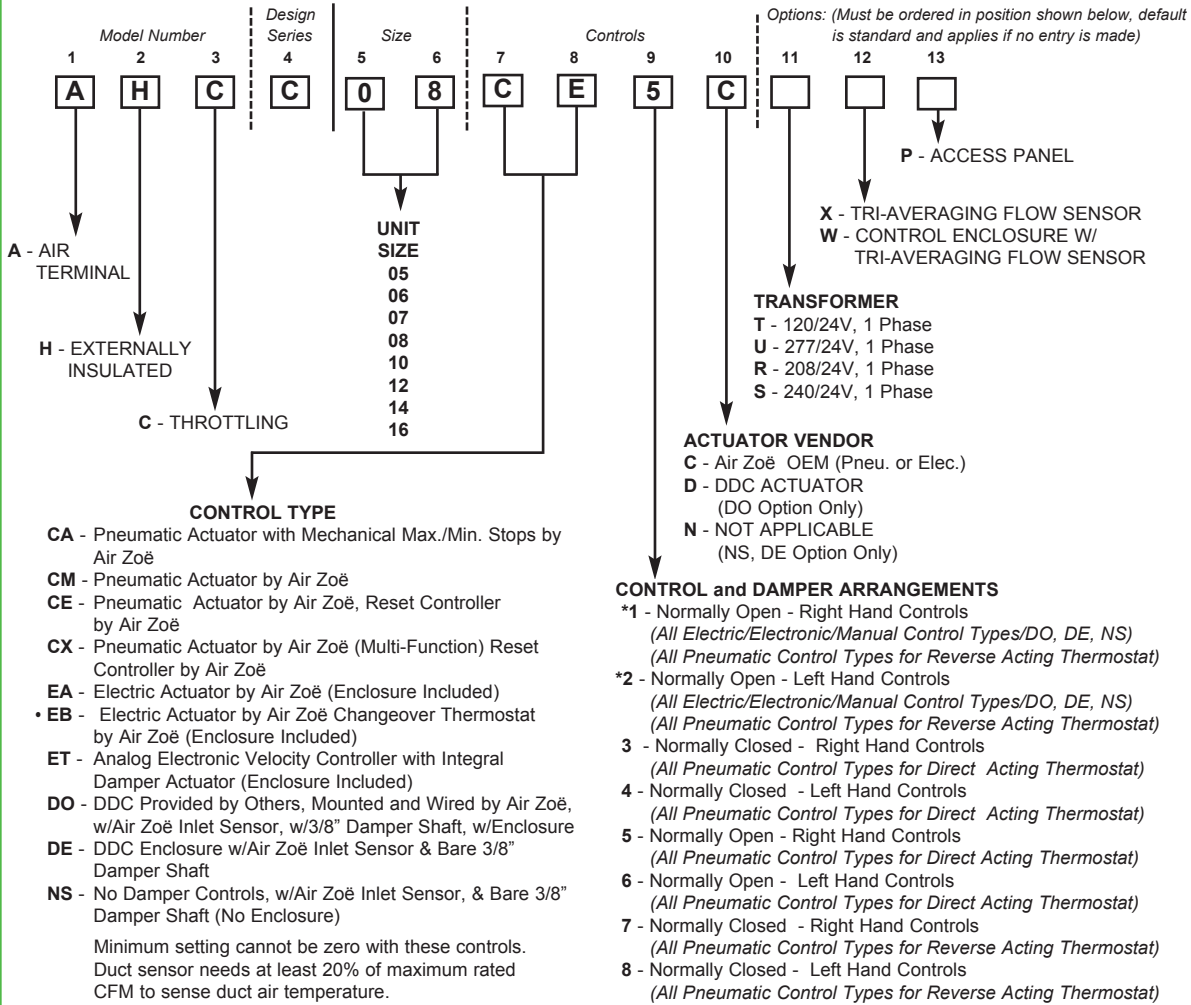
ARI Standard 880

A Participating Member  
in the ARI 880  
Certification Program

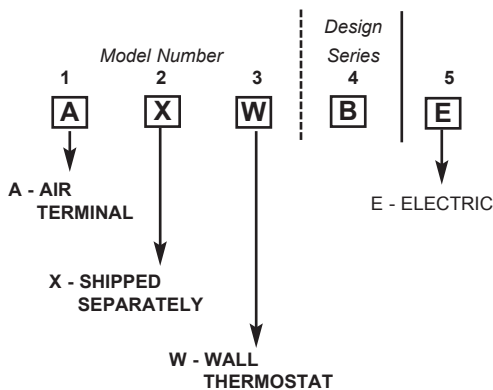
**AIR ZOË**



# MODEL NUMBERING SYSTEM – Model AHC

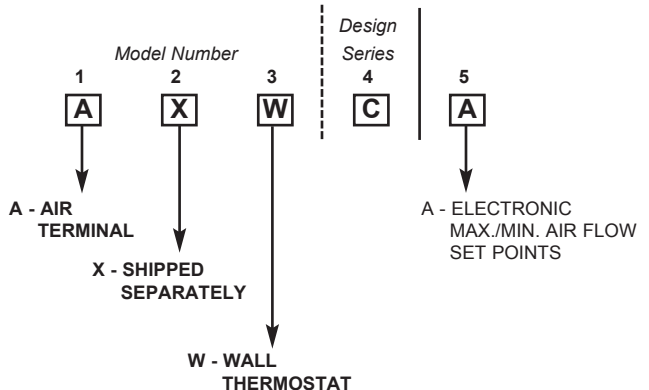


## ELECTRIC THERMOSTAT



An Air Zoë Electric Thermostat **must be ordered** with the Electric EA and EB Control Options

## ELECTRONIC THERMOSTAT

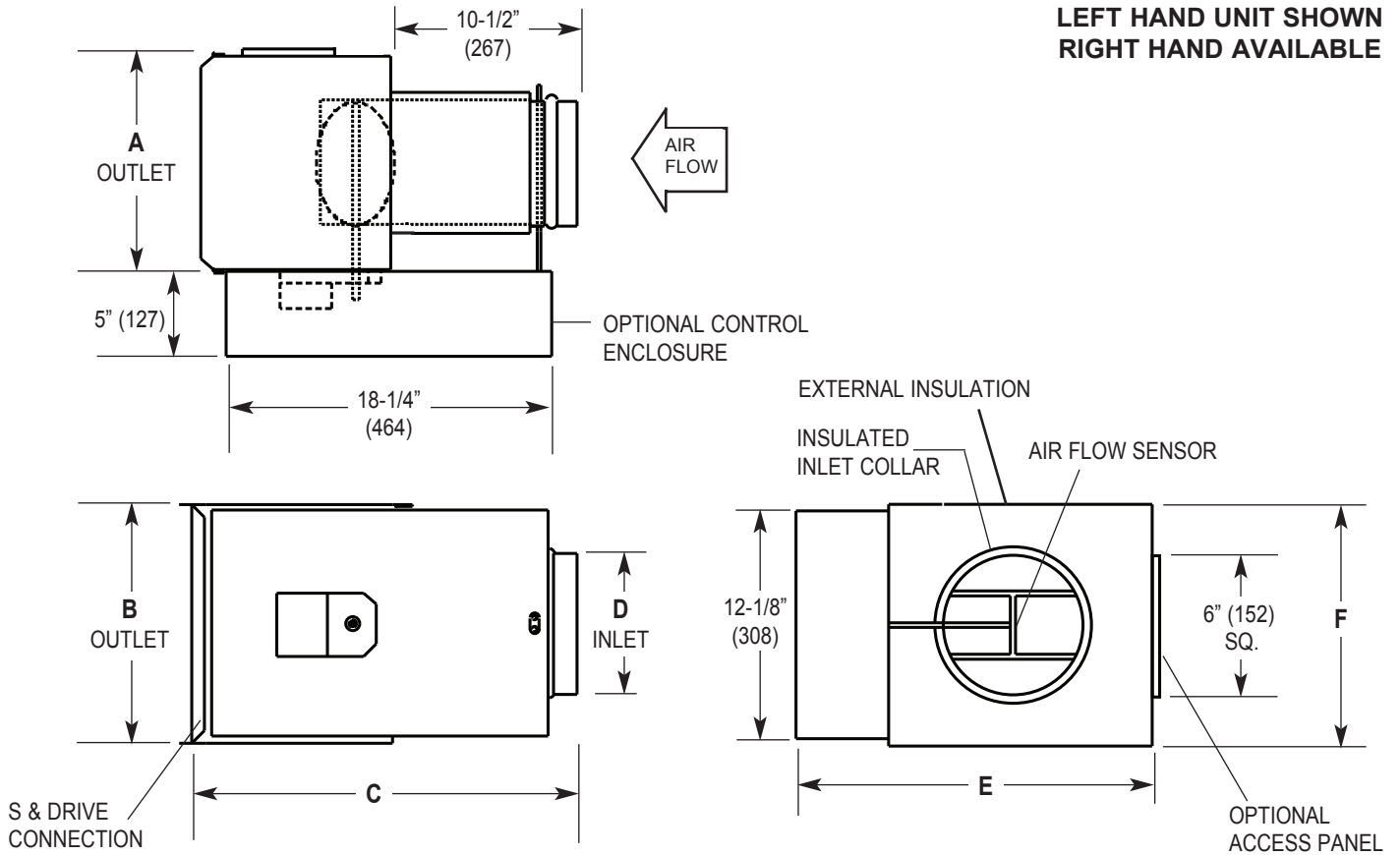


An Air Zoë Electronic Thermostat **must be ordered** with the Electronic ET Control Option.



**DIMENSIONAL DATA – Model AHC**

**LEFT HAND UNIT SHOWN  
RIGHT HAND AVAILABLE**



**DIMENSIONS LISTED IN INCHES (Millimeters)**

Unit Size	CFM Range	Outlet		C	Inlet		E	F
		A	B		D			
05	0-350 (0-165)	12 (305)	10 (254)	20-1/2 (521)	4-7/8 (124)	19 (482)	12 (305)	
06	0-500 (0-236)	12 (305)	10 (254)	20-1/2 (521)	5-7/8 (149)	19 (482)	12 (305)	
07	0-700 (0-330)	12 (305)	10 (254)	20-1/2 (521)	6-7/8 (175)	19 (482)	12 (305)	
08	0-1000 (0-472)	12 (305)	10 (254)	20-1/2 (521)	7-7/8 (200)	19 (482)	12 (305)	
10	0-1500 (0-708)	14 (356)	12-1/2 (318)	20-1/2 (521)	9-7/8 (251)	21 (533)	14-1/2 (368)	
12	0-2300 (0-1085)	16 (406)	15 (381)	20-1/2 (521)	11-7/8 (302)	23 (584)	17 (432)	
14	0-3100 (0-1463)	20 (508)	17-1/2 (445)	20-1/2 (521)	13-7/8 (352)	27 (685)	19-1/2 (495)	
16	0-4200 (0-1982)	24 (610)	17-1/2 (445)	21-1/2 (546)	15-7/8 (403)	31 (787)	19-1/2 (495)	